



SLS-WHT-6953BIUFSM

SPECIFICATION DATA SHEET

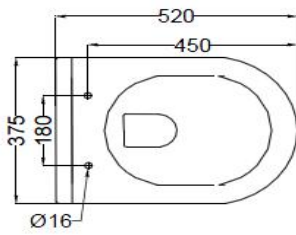
PRODUCT DETAILS

Manufacturer	Jaquar	Type	Wall Hung WC
Colour	White	Flush valves	Regular, Dual & I Flush advantages
Outlet	Horizontal	Material	Ceramic - Vitreous China
Technical Details	Internal diameter of inlet hole $\varnothing 58 \pm 2 / -1$ mm External diameter of outlet hole dia. $\varnothing 100 \pm 5$ mm		

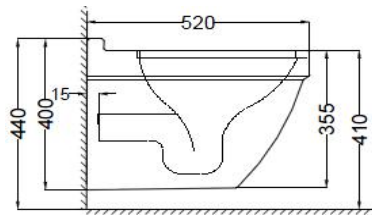
PRODUCT IMAGE



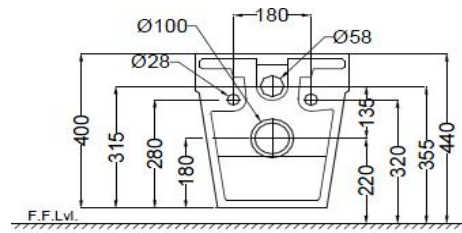
TECHNICAL DRAWING



TOP VIEW



SIDE VIEW



BACK VIEW

Product Dimension	375x520x400 mm	FEATURES
Product Weight	26.78	White Finish, Blind Installation, Rimless Bowl Design, Detachable Slim Seat Cover, Trap glaze, Dual Flush-2.5/4.5 LPF, Anti germ glaze.
ACCESSORIES INCLUDED		
UF soft closing seat cover		SLS-WHT-6103UF
Inlet & Outlet gasket		ZPS-WHT-GK01
Fixing kit		ZPS-WHT-FB13
ACCESSORIES EXCLUDED		
Rag bolt		ZPS-SNS-RB07
Concealed Cistern		JCS-WHT-2400S,2400FS,2400WS

CERTIFICATION

Compliance : EN 997:2012 + A1:2015 (E), SANS 497 : 2011

All technical dimensions are in accordance to British standards, Bureau of Indian Standards



DISCLAIMER: Our every effort has been made to ensure factual accuracy, the information presented subject to changes due to requirements in different sites, markets and/ or countries. All dimensions are in mm (Tolerance ± 5 MM). Jaquar reserves the right to make the necessary amendments at any time without prior notice.